

## ***Steps to Power Mapping***

### **A resource for building your base!**

Here is an exercise you can use to work with a group on.

#### **Step 1: Problem location**

Map around a problem, person or institution. Start by identifying a specific problem or goal. Write it in the center of a piece of newsprint and circle it.

#### **Step 2: Map major Groups**

Identify key decision-making institutions, associations or groups that are related to that problem. Write these names on the newsprint in a ring around the problem.

#### **Step 3: Map individuals associated with the Groups**

Put the names of 2-3 individuals who are associated with each of those institutions or groups in the second ring (moving out concentrically) around the problem. These can be people you know or don't know.

#### **Step 4: Map all other associations with these individuals**

Think about people you know that are connected to these key individuals. The purpose of this is to help identify easier ways to access the individuals or institutions that could help solve the problem, by tapping into existing relationships between people. At this step, you can note any relationships that members in the group have with the people listed and any information you have about them.

#### **Step 5: Determine relational power lines**

The next step is to step back and conceptually review the networks that the group has mapped out. You can do this by drawing lines connecting people and institutions that have relations to each other. Some people will have many connections while others may not have any.

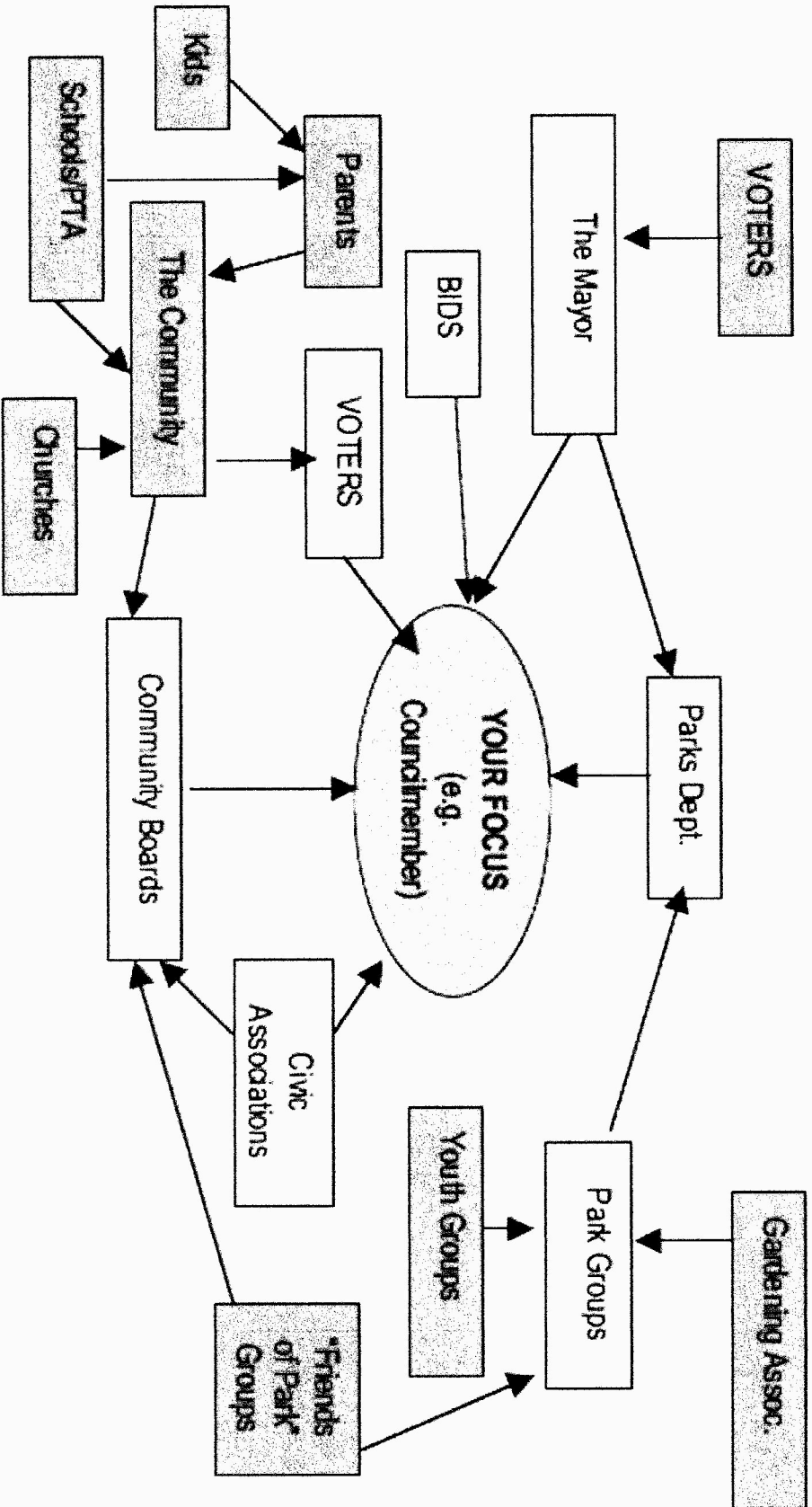
#### **Step 6: Target priority relationships**

Analyze some of the relationships and connections elaborated and make some decisions. One way to do this is to circle the few people that have the most relational power lines drawn to them. Another thing to consider may be a person or institution in the map that doesn't necessarily have many different relational lines running to him/her/it but nonetheless has a few critical ones and seems to hold a lot of influence.

#### **Step 7: Make a plan**

The next step is to create some action steps for what to do. What will people do next? Create 3-5 steps.

# SAMPLE POWER - MAP



# ***Map-it Worksheet***

**What is the Problem:**

---

---

---

**What are the major groups:**

---

---

---

**Who are the individuals connected to these groups:**

---

---

---

**What resources do these groups & individuals bring:**

---

---

---

**What are the priorities:**

---

---

---

---